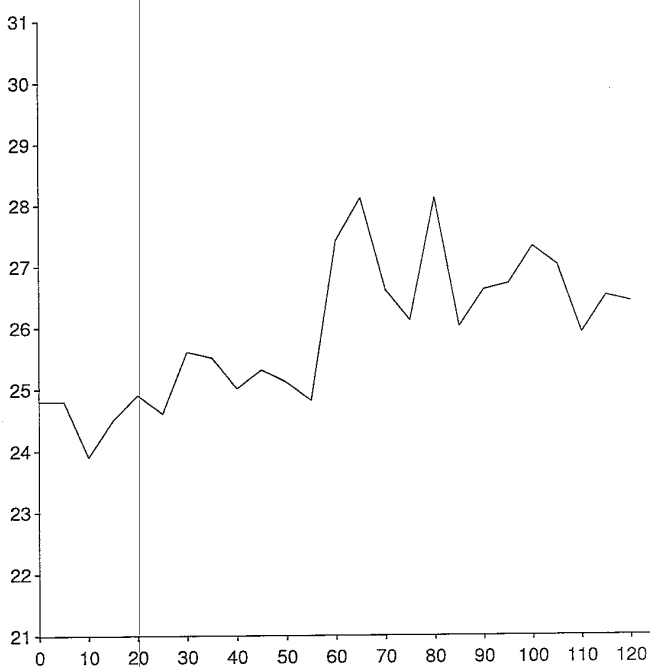
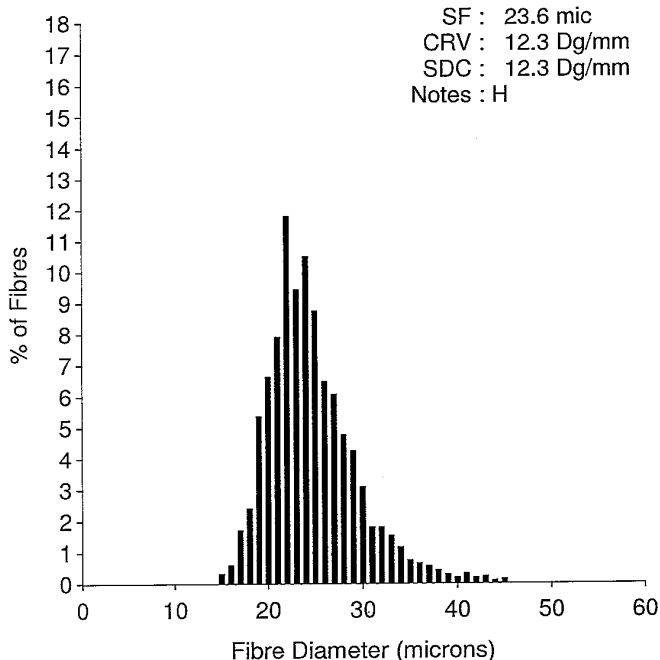


OFDA 2000 REPORT : SORTED BY EID/TAG  
 Samples 02/05/2019 (Trim High On) (153Records)

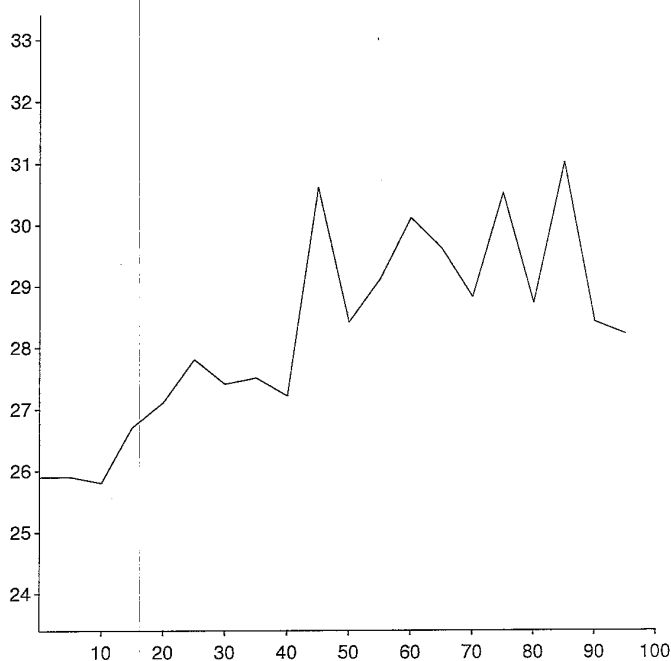
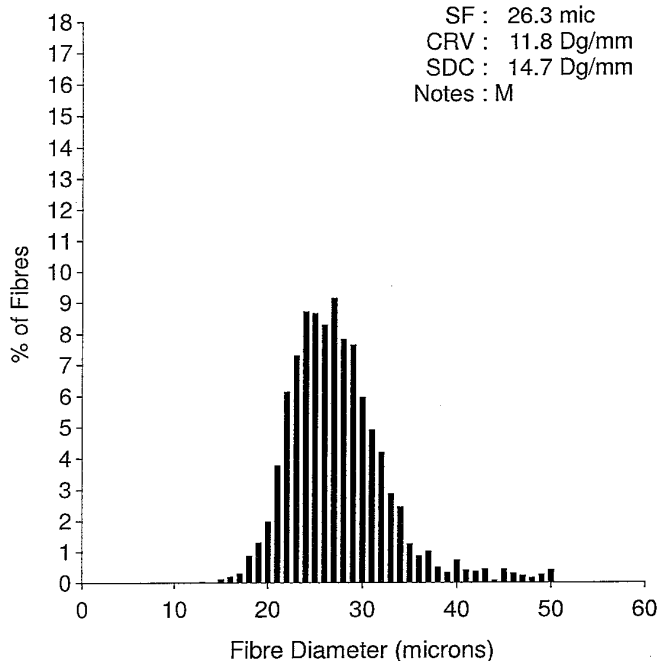
EID : Schoeckbli  
 EarTag : Wanja  
 Micron : 24.6 mic  
 SD : 4.7 mic  
 CVD : 19.0 %  
 CEM : 9.4 mic  
 <15 : 0 %  
 CF : 89.9 %  
 SF : 23.6 mic  
 CRV : 12.3 Dg/mm  
 SDC : 12.3 Dg/mm  
 Notes : H

Staple Len : 125.0 mm  
 Min Mic : 23.9 mic  
 Max Mic : 28.1 mic  
 SD Along : 1.10 mic



EID : Schoeckbli  
 EarTag : Wanja  
 Micron : 27.4 mic  
 SD : 5.3 mic  
 CVD : 19.3 %  
 CEM : 10.1 mic  
 <15 : 0 %  
 CF : 78.0 %  
 SF : 26.3 mic  
 CRV : 11.8 Dg/mm  
 SDC : 14.7 Dg/mm  
 Notes : M

Staple Len : 100.0 mm  
 Min Mic : 25.8 mic  
 Max Mic : 31.0 mic  
 SD Along : 1.60 mic



OFDA 2000 REPORT : SORTED BY EID/TAG  
 Samples 02/05/2019 (Trim High On) (153Records)

EID : Schoeckbli  
 EarTag : Wanja  
 Micron : 25.2 mic  
 SD : 4.7 mic  
 CVD : 18.8 %  
 CEM : 9.3 mic  
 <15 : 0.4 %  
 CF : 87.9 %  
 SF : 24.1 mic  
 CRV : 13.9 Dg/mm  
 SDC : 14.6 Dg/mm  
 Notes : V

Staple Len : 125.0 mm  
 Min Mic : 24.0 mic  
 Max Mic : 28.2 mic  
 SD Along : 1.10 mic

